



**Catalogue**  
**CATERING**  
**Chapter**  
**OVENS**

**Model**  
 APG-202 NG 230V 1N 50Hz

19011930

24/01/2019

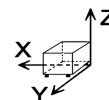
**GAS ADVANCE PLUS OVEN, APG-202**

High quality, fast cooking :  
 Professional quality and perfect results  
 Easy to use and efficient

- Capacity for 40 1/1-GN trays or 20 GN-2/1 trays.
- Stainless steel burner with electronic control system with sparking plug ignition.
- Frequency modulation for the convection burner.
- “Touch control” screen.
- 4 cooking methods: Steam, Adjustable Steam (Humidity control during cooking), Regeneration and Convection (up to 300°C).
- Preheating option.
- Fagor Easy cooking mode.
- Fagor Cooking, range of cooking programmes.
- Fagor Multi-Tray System, control cooking by tray.
- Delayed programming for: Cooking, Low-temperature cooking and Washing.
- Memory function: records the different cooking methods used.
- 3 Speeds - 2 power ranges.
- Cold-Down chamber cooling system.
- “Auto-reverse” system to reverse fan rotation.
- 5 wash programmes.
- Multisensor temperature probe.
- PC management software: History, recipes. HACCP, manuals...
- HACCP cooking data recording system.
- Steam generator equipped with limescale detector.
- Steam generator automatically empties every 24 hours of cooking.
- Semi-automatic limescale removal system.
- Error detection system. “Repair service” mode system.
- IPX-5 protection.
- Retractable shower.
- Built-in trolley and structure for trays.

**DIMENSIONS**

X Width	1162 mm	X Gross width	1250 mm
Y Depth	1074 mm	Y Gross depth	1200 mm
Z Height	1841 mm	Z Gross height	2080 mm
Net Weight	410,0 kg	Gross Weight	475,0 kg
Net volume	2,298 m3	Gross volume	3,120 m3



**ELECTRICITY TECHNICAL SPECIFICATIONS**

Electric power	2,400 kW
Voltage	230V - 1N
Amperage	10,4
Electric frequency	50Hz

**GAS TECHNICAL SPECIFICATIONS**

Gas type	NG
Gas power	65,00 kW
Regulated	NG G20/G25/G25.1 20/25/25 mbar

**WATER TECHNICAL SPECIFICATIONS**

Water max consumption	30,00 L/h
Pressure	H2O: 200-400kPa(2-4bar)

**OTHERS**

Noise level	62,00 dB
-------------	----------



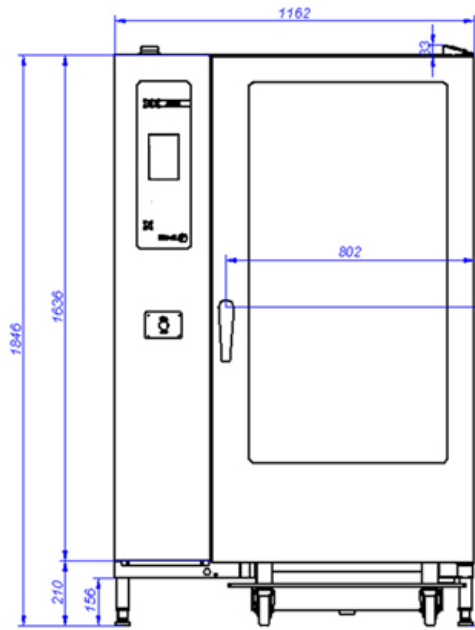
Catalogue  
**CATERING**

Chapter  
**OVENS**

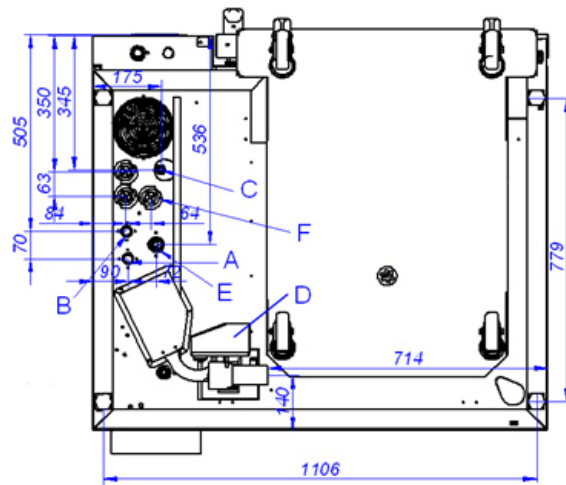
Model  
**APG-202 NG 230V 1N 50Hz**

19011930

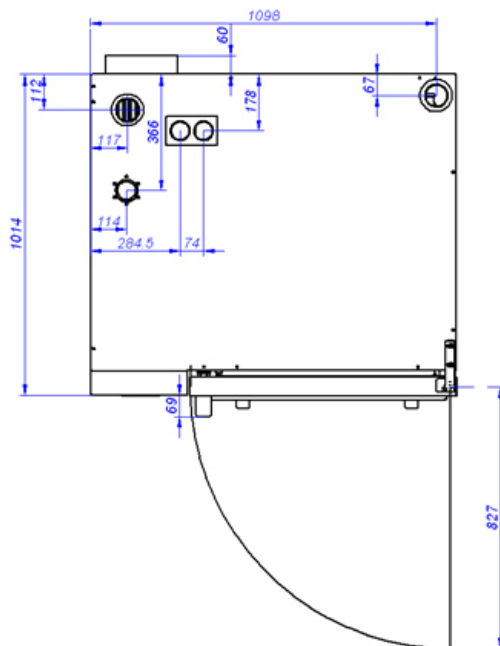
24/01/2019



**APG-202**



VISTA DE LA BASE DESDE LA PARTE INFERIOR  
VIEW FROM THE BOTTOM OF THE MACHINE



A: Entrada de agua blanda  
B: Entrada de agua dura  
D: Desagüe

C: Alimentación eléctrica

E: Entrada de gas

F: Entrada de aire

A: Soft water inlet  
B: Water inlet  
D: Drain

C: Electrical connection

E: Gas inlet

F: Air