



Catalogue
CATERING
Chapter
OVENS

Model
 APG-101 NG 230V 1N 60Hz

19011904

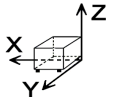
24/01/2019

GAS ADVANCE PLUS OVEN, APG-101

High quality, fast cooking :
 Professional quality and perfect results
 Easy to use and efficient

- Capacity for 10 1/1-GN trays.
- Stainless steel burner with electronic control system with sparking plug ignition.
- Frequency modulation for the convection burner.
- Touch control screen.
- 4 cooking methods: Steam, Adjustable Steam (Humidity control during cooking), Regeneration and Convection (up to 300°C).
- Preheating option.
- Fagor Easy cooking mode.
- Fagor Cooking, range of cooking programmes.
- Fagor Multi-Tray System, control cooking by tray.
- Delayed programming for: Cooking, Low-temperature cooking and Washing.
- Memory function: records the different cooking methods used.
- 3 Speeds - 2 power ranges.
- Cold-Down chamber cooling system.
- Auto-reverse system to reverse fan rotation.
- 5 wash programmes.
- Multisensor temperature probe.
- PC management software: History, recipes. HACCP, manuals...
- HACCP cooking data recording system.
- Steam generator equipped with limescale detector.
- Steam generator automatically empties every 24 hours of cooking.
- Semi-automatic limescale removal system.
- Error detection system. "Repair service" mode system.
- IPX-5 protection.
- Retractable shower.

DIMENSIONS



X Width	898 mm	X Gross width	980 mm
Y Depth	922 mm	Y Gross depth	1060 mm
Z Height	1117 mm	Z Gross height	1345 mm
Net Weight	173,0 kg	Gross Weight	204,0 kg
Net volume	0,925 m3	Gross volume	1,397 m3

ELECTRICITY TECHNICAL SPECIFICATIONS

Electric power	1,200 kW
Voltage	230V - 1N
Amperage	5,2
Electric frequency	60Hz

GAS TECHNICAL SPECIFICATIONS

Gas type	NG
Gas power	18,00 kW
Regulated	NG G20/G25/G25.1 20/25/25 mbar

WATER TECHNICAL SPECIFICATIONS

Water max consumption	30,00 L/h
Pressure	H2O: 200-400kPa(2-4bar)

OTHERS

Noise level	62,00 dB
-------------	----------



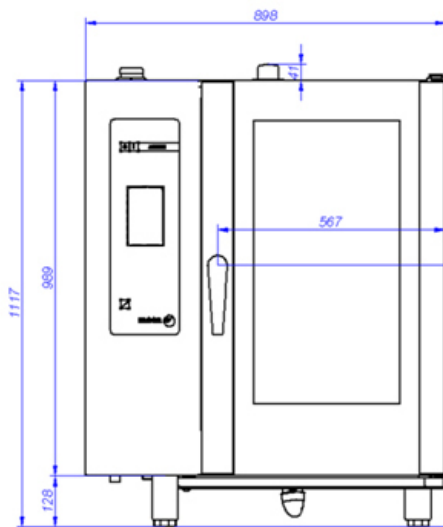
Catalogue
CATERING

Chapter
OVENS

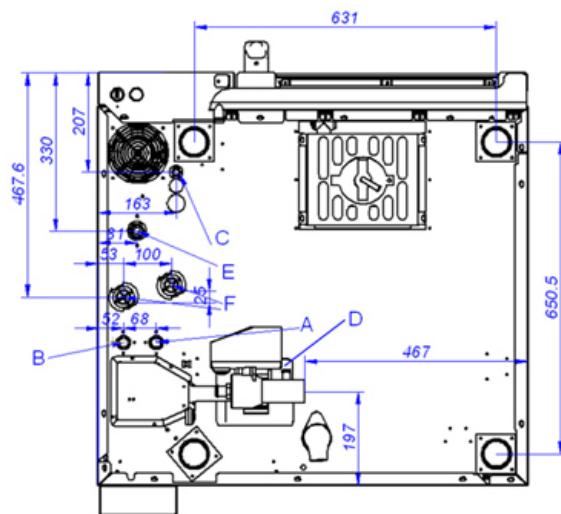
Model
APG-101 NG 230V 1N 60Hz

19011904

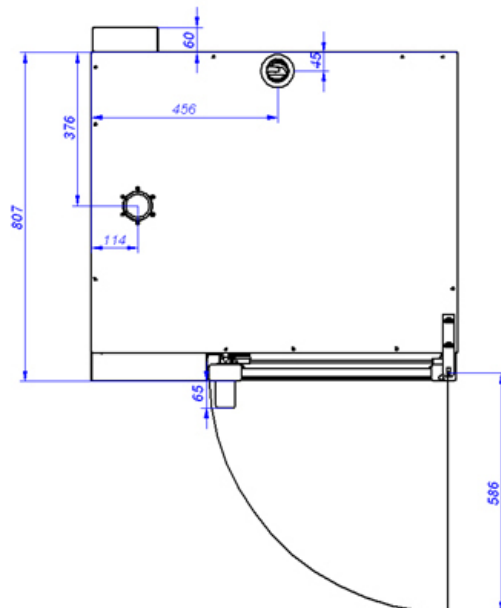
24/01/2019



APG-101



VISTA DE LA BASE DESDE LA PARTE INFERIOR
VIEW FROM THE BOTTOM OF THE MACHINE



A: Entrada de agua blanda
B: Entrada de agua dura
D: Desagüe

C: Alimentación eléctrica

E: Entrada de gas

F: Entrada de aire

A: Soft water inlet
B: Water inlet
D: Drain

C: Electrical connection

E: Gas inlet

F: Air