



**Catalogue**  
**CATERING**  
**Chapter**  
**OVENS**

**Model**  
 APG-061 NG 230V 1N 60Hz

19011887

24/01/2019

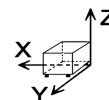
**GAS ADVANCE PLUS OVEN, APG-061**

High quality, fast cooking :  
 Professional quality and perfect results  
 Easy to use and efficient

- Capacity for 6 1/1-GN trays.
- Stainless steel burner with electronic control system with sparking plug ignition.
- Frequency modulation for the convection burner.
- Touch control screen.
- 4 cooking methods: Steam, Adjustable Steam (Humidity control during cooking), Regeneration and Convection (up to 300°C).
- Preheating option.
- Fagor Easy cooking mode.
- Fagor Cooking, range of cooking programmes.
- Fagor Multi-Tray System, control cooking by tray.
- Delayed programming for: Cooking, Low-temperature cooking and Washing.
- Memory function: records the different cooking methods used.
- 3 Speeds - 2 power ranges.
- Cold-Down chamber cooling system.
- Auto-reverse system to reverse fan rotation.
- 5 wash programmes.
- Multisensor temperature probe.
- PC management software: History, recipes. HACCP, manuals...
- HACCP cooking data recording system.
- Steam generator equipped with limescale detector.
- Steam generator automatically empties every 24 hours of cooking.
- Semi-automatic limescale removal system.
- Error detection system. "Repair service" mode system.
- IPX-5 protection.
- Retractable shower.

- Optional elements:
- Structure for trays EB-101 or dishes EP-101
  - trolley for Structure CP-101
  - Supports SH-101

**DIMENSIONS**



X Width	898 mm	X Gross width	980 mm
Y Depth	922 mm	Y Gross depth	1060 mm
Z Height	846 mm	Z Gross height	1100 mm
Net Weight	158,0 kg	Gross Weight	192,0 kg
Net volume	0,700 m3	Gross volume	1,143 m3

**ELECTRICITY TECHNICAL SPECIFICATIONS**

Electric power	1,200 kW
Voltage	230V - 1N
Amperage	5,2
Electric frequency	60Hz

**GAS TECHNICAL SPECIFICATIONS**

Gas type	NG
Gas power	12,00 kW
Regulated	NG G20 20 mbar

**WATER TECHNICAL SPECIFICATIONS**

Pressure	Flow Rinse Pressure 15-30 psi
----------	-------------------------------



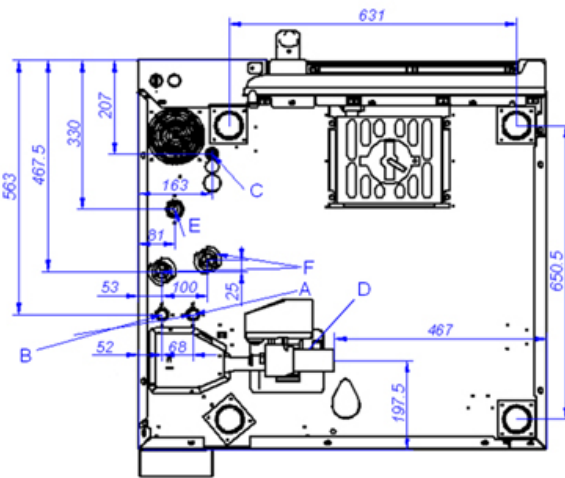
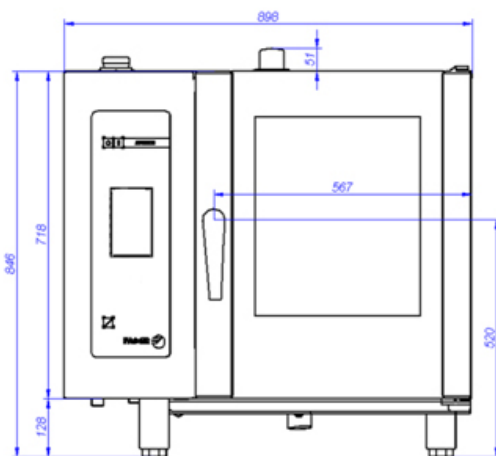
Catalogue  
**CATERING**

Chapter  
**OVENS**

Model  
**APG-061 NG 230V 1N 60Hz**

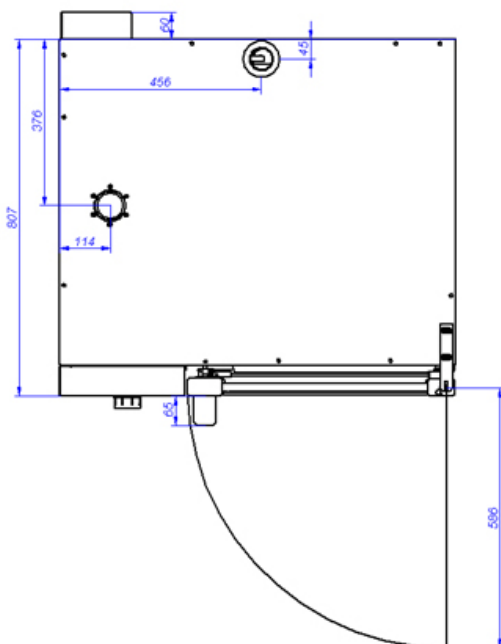
19011887

24/01/2019



**APG-061**

VISTA DE LA BASE DESDE LA PARTE INFERIOR  
VIEW FROM THE BOTTOM OF THE MACHINE



- A: Entrada de agua blanda
- B: Entrada de agua dura
- D: Desagüe

C: Alimentación eléctrica

E: Entrada de gas

F: Entrada de aire

A: Soft water inlet

B: Water inlet

D: Drain

C: Electrical connection

E: Gas inlet

F: Air