



**Catalogue**  
**CATERING**  
**Chapter**  
**OVENS**

**Model**  
 ACG-061 NG 230V 1N 60Hz

19011880

24/01/2019

**ADVANCE CONCEPT INJECTION COMBI OVEN, ACG-061**

Technology made simple :

Affordable  
 Easy to use  
 efficient  
 Simple  
 perfect results

Capacity for 6 1/1-GN trays.

Stainless steel burner with electronic control system with sparking plug ignition.

Frequency modulation for the convection burner.  
 Digital push-button controls and two "Scroll" buttons.  
 5 Cooking methods: Steam, Combi, Regeneration, Delta and Convection (up to 300°C).

Steam generated by injection in the cooking chamber.  
 Multisensor core temperature probe.  
 Preheating option.

3 Speeds - 2 power ranges.

Cold-Down chamber cooling system.

"Auto-reverse" system to reverse fan rotation.

Error detection system. "Repair service" mode system.

IPX5 Protection.

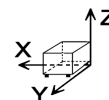
AUTOMATIC CLEANING - Wash program for the cooking chamber.

Door with double glass and hermetic locking and folding interior glass.

Accessories in option:

Support SH-11  
 Structure for trays EB-61  
 Structure for dishes EP-61  
 - Trolley CP-11.  
 External shower

**DIMENSIONS**



X Width	898 mm	X Gross width	980 mm
Y Depth	867 mm	Y Gross depth	1001 mm
Z Height	846 mm	Z Gross height	1100 mm
Net Weight	134,0 kg	Gross Weight	166,0 kg
Net volume	0,659 m3	Gross volume	1,079 m3

**ELECTRICITY TECHNICAL SPECIFICATIONS**

Voltage	230V - 1N
Electric frequency	60Hz

**GAS TECHNICAL SPECIFICATIONS**

Gas type	NG
Gas power	12,00 kW
Regulated	NG G20 20 mbar

**WATER TECHNICAL SPECIFICATIONS**

Pressure	H2O: 200-400kPa(2-4bar)
----------	-------------------------



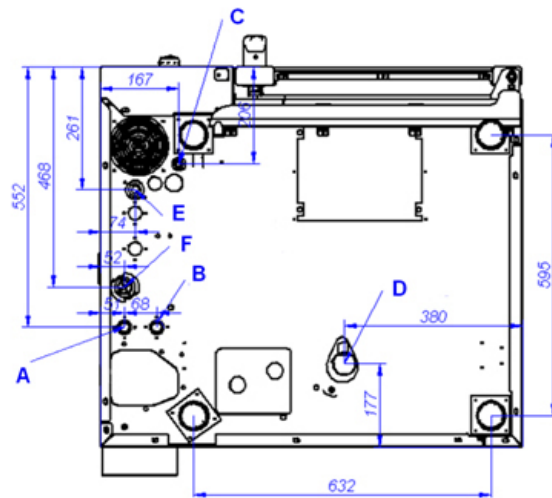
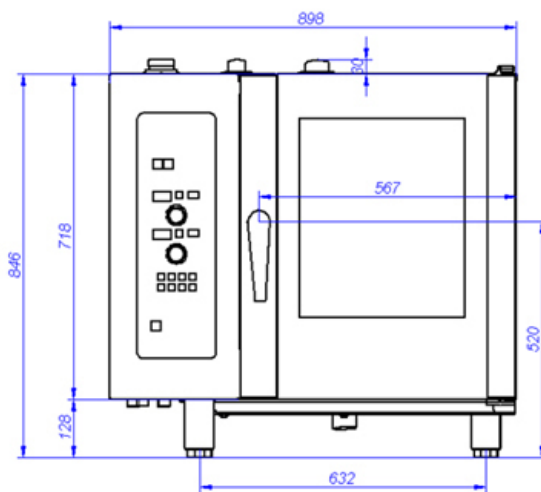
Catalogue  
**CATERING**

Chapter  
**OVENS**

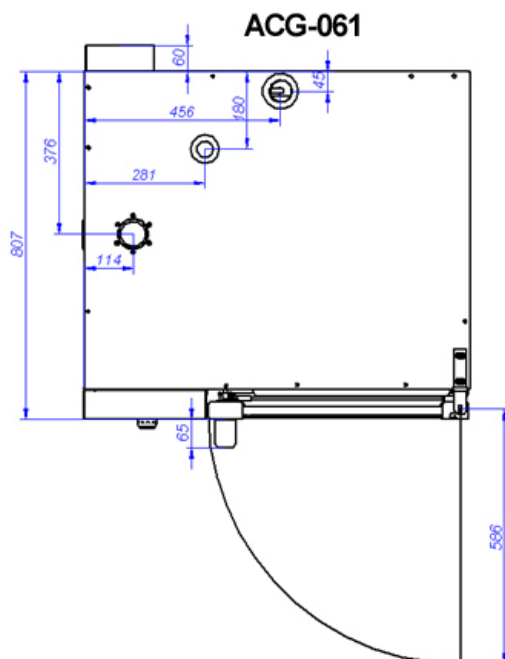
Model  
**ACG-061 NG 230V 1N 60Hz**

19011880

24/01/2019



VISTA DE LA BASE DESDE LA PARTE INFERIOR  
VIEW FROM THE BOTTOM OF THE MACHINE



A: Entrada de agua blanda  
B: Entrada de agua dura  
D: Desagüe

C: Alimentación eléctrica

E: Entrada de gas

F: Entrada de aire

A: Soft water inlet  
B: Water inlet  
D: Drain

C: Electrical connection

E: Gas inlet

F: Air