



Catalogue
CATERING
Chapter
OVENS

Model
 APE-061-IZQ 400/230V 3N/3 50/60Hz

19042535

24/01/2019

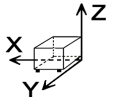
ADVANCE PLUS OVEN, APE-061 IZQ
 Innovative technology in the kitchen :

Professional quality
 - Precision, excellence and perfect results
 Save time and money

- Capacity for 6 1/1-GN trays.
- Touch control screen.
- 4 cooking methods: Steam, Adjustable Steam (Humidity control during cooking), Regeneration and Convection (up to 300°C).
- Preheating option.
- Fagor Easy cooking mode.
- Fagor Cooking, range of cooking programmes.
- Fagor Multi-Tray System, control cooking by tray.
- Delayed programming for: Cooking, Low-temperature cooking and Washing.
- Memory function: records the different cooking methods used.
- 3 Speeds - 2 power ranges.
- Cold-Down chamber cooling system.
- Auto-reverse system to reverse fan rotation.
- 5 wash programmes.
- Multisensor temperature probe.
- PC management software: History, recipes. HACCP, manuals...
- HACCP cooking data recording system.
- Steam generator equipped with limescale detector.
- Steam generator automatically empties every 24 hours of cooking.
- Semi-automatic limescale removal system.
- Error detection system.
- Repair service mode system.
- Quick door-closing system.
- IPX-5 protection.
- Retractable shower.
- Power: 10.2 kW.

Accessories in option:
 Support SH-61
 Neutral Support-cabinet ANH or hot cabinet ACH
 - GN trays, grids, moulds...

DIMENSIONS



X Width	898 mm	X Gross width	980 mm
Y Depth	867 mm	Y Gross depth	1001 mm
Z Height	846 mm	Z Gross height	1100 mm
Net Weight	143,0 kg	Gross Weight	176,0 kg
Net volume	0,659 m3	Gross volume	1,079 m3

ELECTRICITY TECHNICAL SPECIFICATIONS

Electric power	10,200 kW
Heating power	9,00 kW
Voltage	400/230V - 3N/3
Amperage	18/28
Electric frequency	50/60Hz

WATER TECHNICAL SPECIFICATIONS

Water max consumption	22,00 L/h
Pressure	H2O: 200-400kPa(2-4bar)



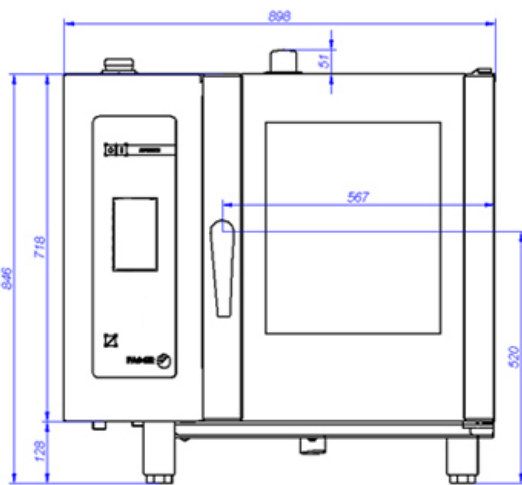
Catalogue
CATERING

Chapter
OVENS

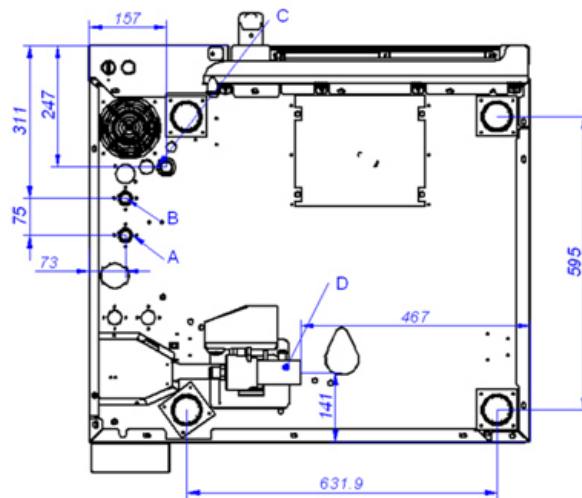
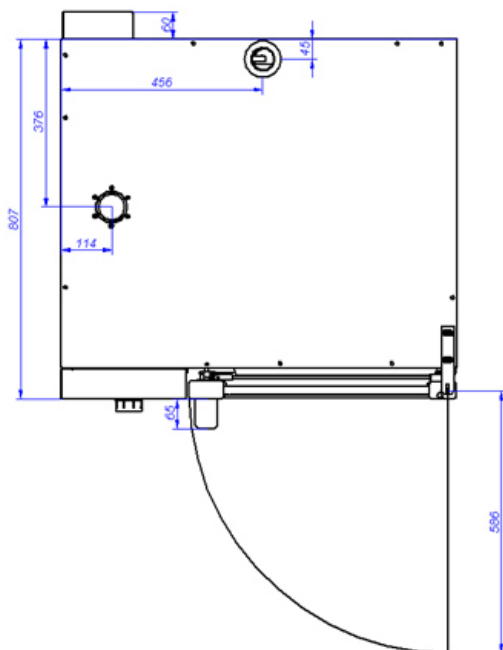
Model
APE-061-IZQ 400/230V 3N/3 50/60Hz

19042535

24/01/2019



APE-061



VISTA DE LA BASE DESDE LA PARTE INFERIOR
VIEW FROM THE BOTTOM OF THE MACHINE

A: Entrada de agua blanda
B: Entrada de agua dura
D: Desagüe

C: Alimentación eléctrica

A: Soft water inlet
B: Water inlet
D: Drain

C: Electrical connection